



**RAFFLES GIRLS' PRIMARY SCHOOL**  
**SEMESTRAL ASSESSMENT (1)**  
**2019**

Section A	56
Section B	44
Your score out of 100%	
Parent's signature	

Name : \_\_\_\_\_ Index No.: \_\_\_\_\_ Class: P5 \_\_\_\_\_ Date: \_\_\_\_\_

**15 May 2019**

**SCIENCE**

**ATT: 1 h 45 min**

**SECTION A (28 x 2 marks)**

For each question from 1 to 28, four options are given. One of them is the correct answer. Make your choice (1, 2, 3 or 4). Shade the correct oval (1, 2, 3 or 4) on the Optical Answer Sheet (OAS) provided.

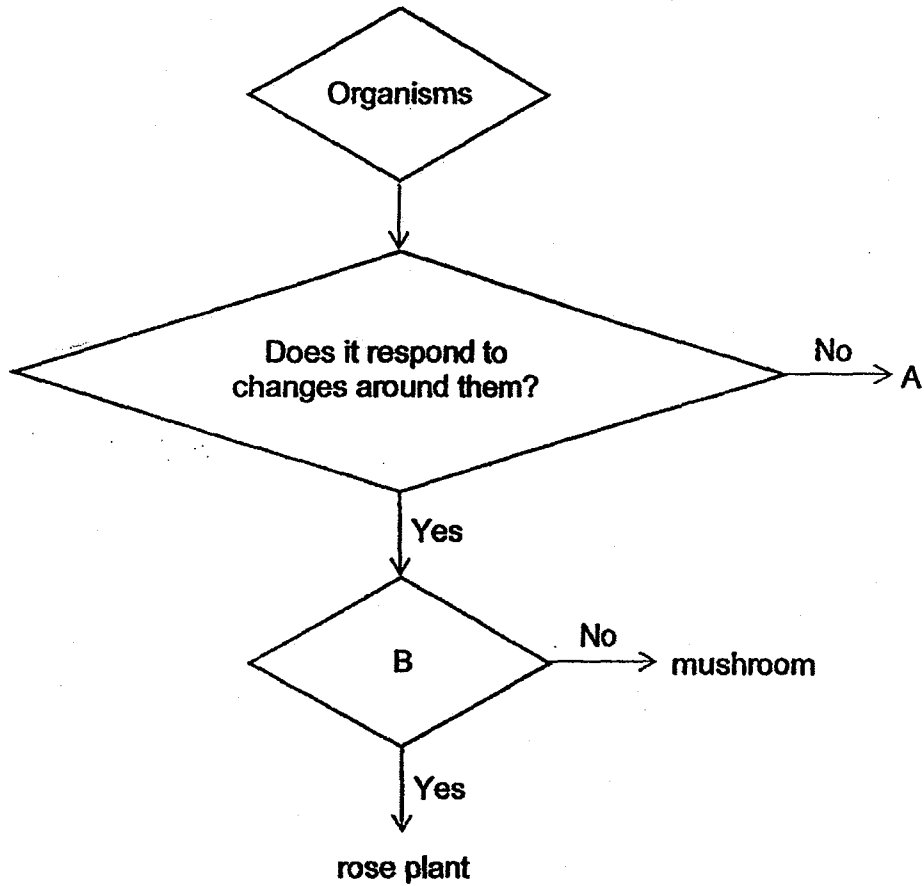
1. The table below shows the characteristics of animals W, X, Y and Z. A tick (✓) shows the presence of the characteristic.

Characteristic	Animal W	Animal X	Animal Y	Animal Z
Lays eggs		✓	✓	✓
Has hair	✓			
Has scales		✓	✓	
Breathe through lungs only	✓		✓	
Lives on land and water				✓

Which of the following correctly shows the animal groups for animals W, X, Y and Z?

	Amphibian	Fish	Mammals	Reptile
(1)	X	Z	Y	W
(2)	Z	X	W	Y
(3)	W	Y	X	Z
(4)	Y	W	Z	X

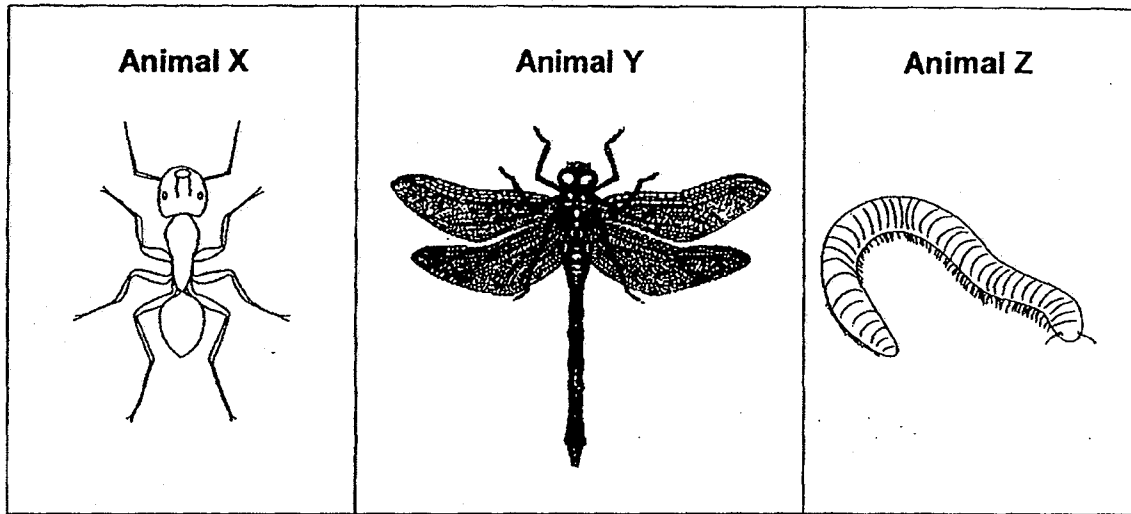
2. Study the chart below.



Which of the following is correct?

	A	B
(1)	ant	Is it alive?
(2)	tree	Is it a flowering plant?
(3)	rotting log	Does it make food?
(4)	bread mould	Is it poisonous?

3. The diagrams below show animals X and Y.

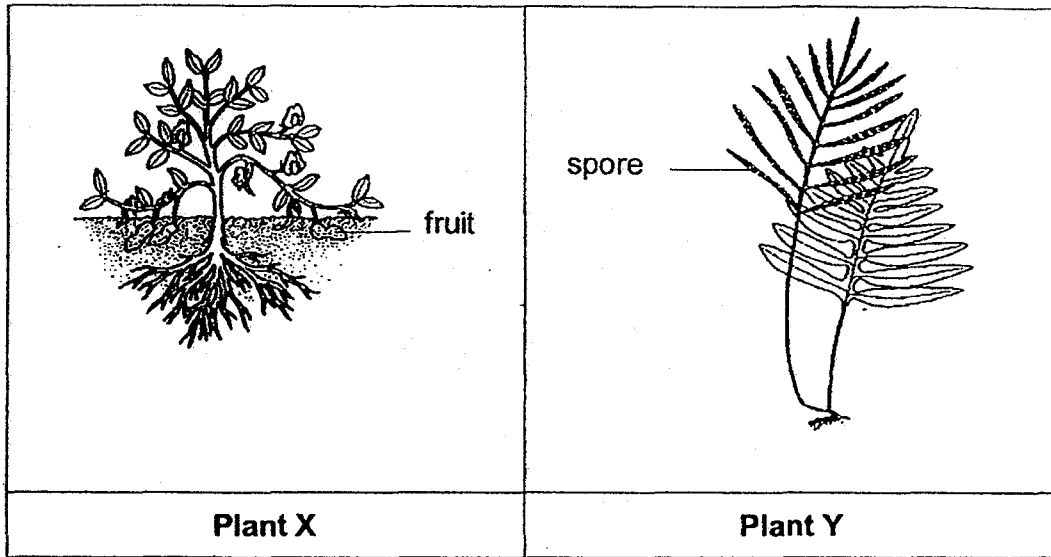


Based on the observations above, which of the following statements are correct?

- A All animals have six legs.
- B All three animals have three body parts.
- C Animal X and Y are insects but not animal Z.
- D Animal Y can fly but not animal X and animal Z.

- (1) A and B only
- (2) A and D only
- (3) B and C only
- (4) C and D only

4. The diagram below shows two plants growing in the garden.







Which of the following statement(s) is/are correct?

- A Both plant X and Y can make food.
- B Both plant X and Y are flowering plants.
- C Plant X is a flowering plant but not plant Y.

- (1) B only
- (2) A and B only
- (3) A and C only
- (4) A, B and C only

5. Tom wanted to find out if the presence of water has an effect on the growth of mould. He prepared four set-ups and placed them in various locations as shown below.

 <p>dried vegetable</p>	 <p>dried vegetable</p>
<p><b>Set-up A</b> Location: Warm room</p>	<p><b>Set-up B</b> Location: Refrigerator</p>
 <p>fresh vegetable</p>	 <p>fresh vegetable</p>
<p><b>Set-up C</b> Location: Warm room</p>	<p><b>Set-up D</b> Location: Refrigerator</p>

After sometime, he observed that mould was found growing in set-ups A, C and D.

Which of the following correctly explains his observation?

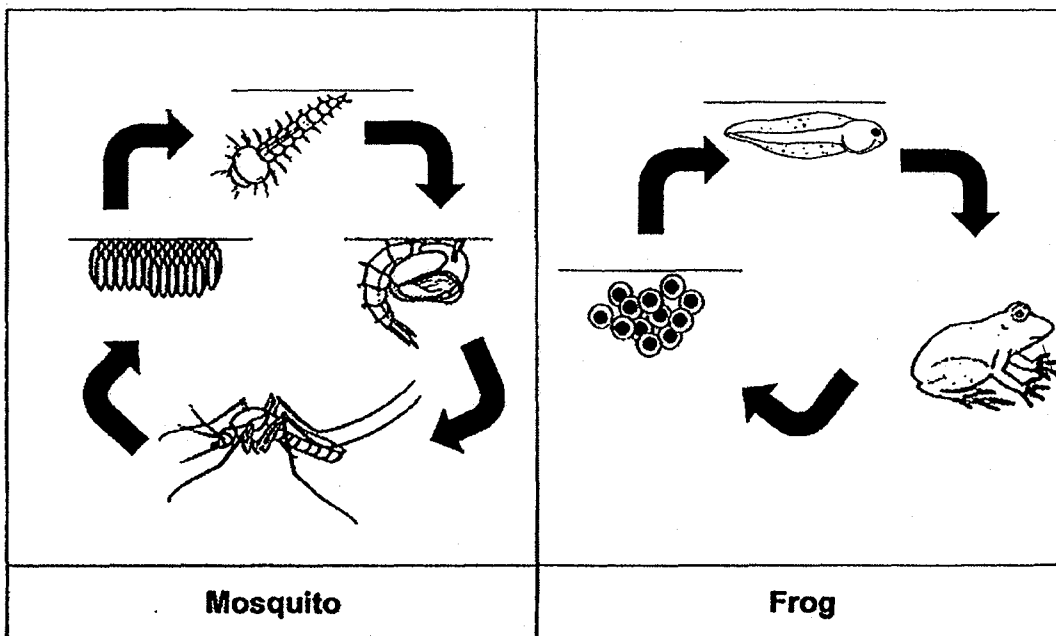
- A Mould was growing in set-up A as there was moisture in the air.
  - B No mould was growing in set-up B as there was no oxygen in the fridge.
  - C Mould was growing in set-up C as there was moisture in the air and in the vegetable.
  - D Mould was growing in set-up D as there was moisture in the vegetable.
- (1) B only  
 (2) A and B only  
 (3) C and D only  
 (4) A, C and D only

6. Which of the following statements are true of a cockroach and butterfly?

- A Their eggs are laid on land.
- B Their young do not have wings.
- C Their young resemble the adult.
- D They have four stages in their life cycle.

- (1) A and B only
- (2) A and D only
- (3) B and C only
- (4) C and D only

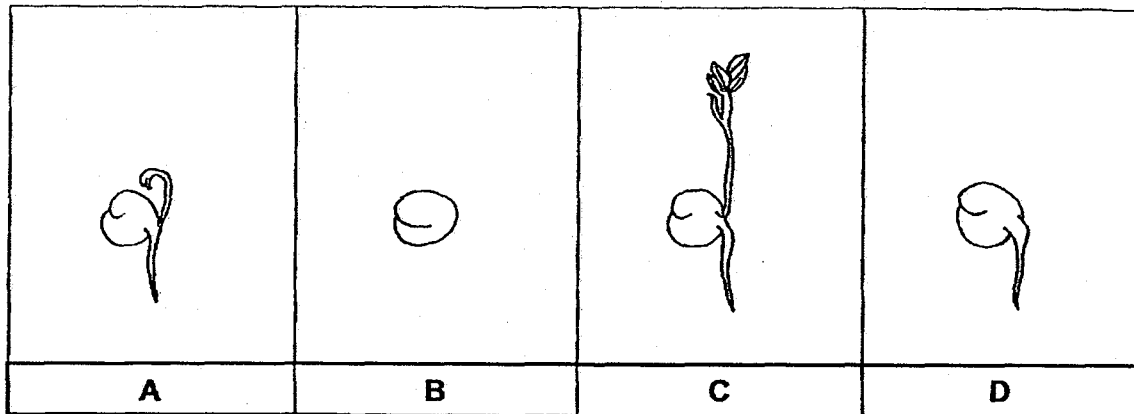
7. The diagram below shows the life cycle of a mosquito and a frog.



Based on the diagrams above, which of the following statements is correct?

- (1) Both organisms have 4-stage life cycle.
- (2) The young of both organisms live in water.
- (3) Both the young of the organisms look like their adults.
- (4) The adult of both organisms live on land and in water.

8. The diagrams below show the stages of development of a seed.



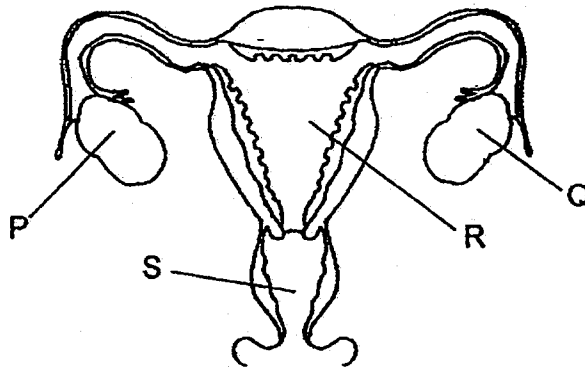
Which of the following shows the correct arrangement of the stages of development of a seed?

- (1) BADC
- (2) BCAD
- (3) BDAC
- (4) BDCA

9. Which of the following statement about sexual reproduction in animals is correct?

- (1) Fertilisation occurs when the sperm fuses with the egg.
- (2) Fertilisation occurs at the organ where the foetus eventually develops.
- (3) Traits of the male parent are passed onto the offspring through the sperm and egg.
- (4) The testes produce the male sex cells while the uterus produces the female sex cells.

10. The diagram below shows the female reproductive system.



Which of the following statements below is correct?

- (1) The egg cells are only stored at R.
- (2) No egg cell can be produced if Q is removed.
- (3) Sperm enters at S to swim towards the egg cell.
- (4) Sperms released from P fuses with the egg cell.

11. A student made three statements, A, B and C, about sexual reproduction in plants and animals:

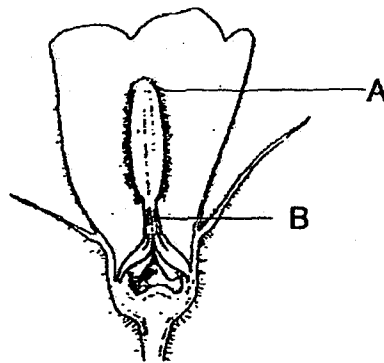
- A Pollen grains are transferred from the anther to the stigma.
- B Fertilisation occurs in a female reproductive part.
- C Fertilised egg is developed into a foetus in the womb.

Which of the following statements are grouped under the sexual reproduction in plants and humans correctly?

	Plants	Humans
(1)	A	B, C
(2)	B	A, C
(3)	A, B	B, C
(4)	A, B	A, C



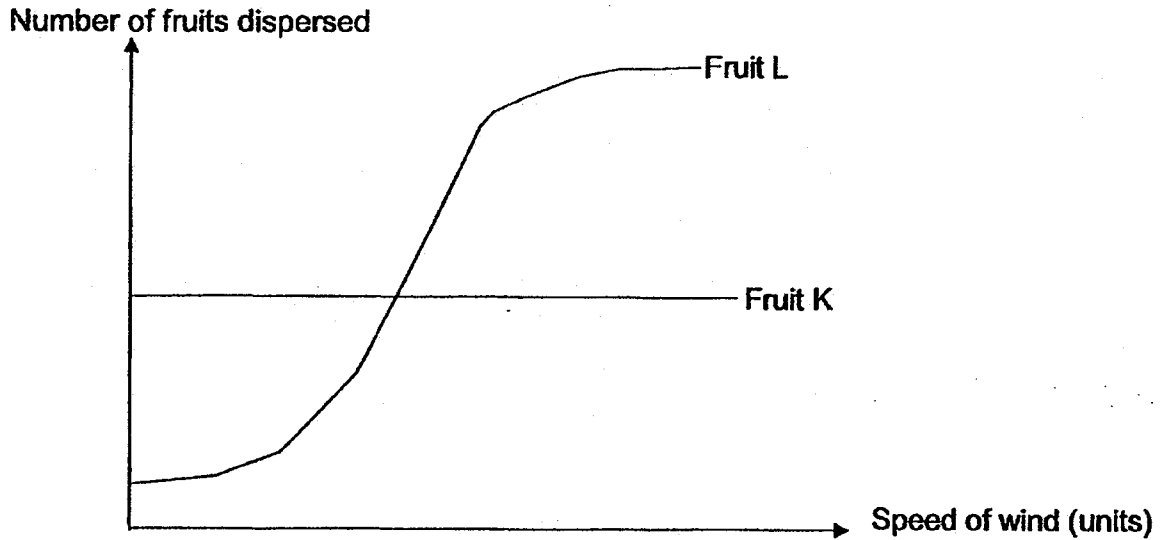
12. The diagram below shows a cross section of a male flower on a plant.



Which of the following identifies part A and part B correctly?

	<b>A</b>	<b>B</b>
(1)	stigma	style
(2)	style	stigma
(3)	anther	filament
(4)	filament	anther

13. The graph below shows how the speed of wind affects the number of fruits K and L are dispersed from their respective parent plants.



Based on the information above, which of the following statements are correct?

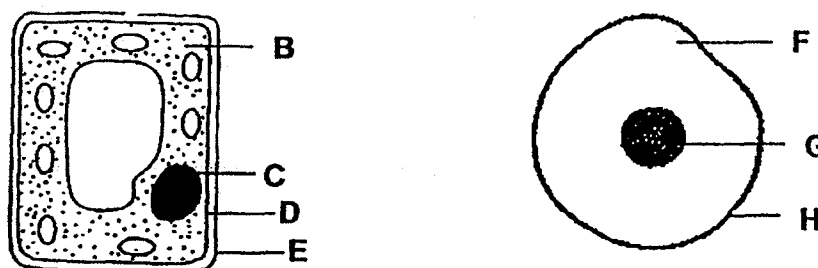
- A Fruit K has more wing-like structures than fruit L.
  - B Wind speed affects the dispersal of fruit L but not fruit K.
  - C A greater number of fruit L can be found along the river bank.
  - D A greater number of fruit L will be dispersed during windy condition.
- (1) A and C  
(2) A and D  
(3) B and C  
(4) B and D

14. Cheryl wanted to find out if warmth is needed in the germination of seeds. She prepared the following set-ups.

Set-up	A	B	C	D
Amount of light provided (units)	0	0	300	300
Amount of water given (ml)	50	0	50	50
Temperature (°C)	2	30	2	30

Which of the following set-ups should she use to ensure a fair experiment?

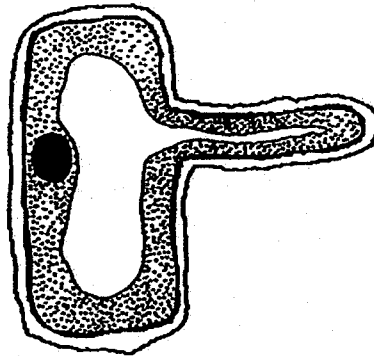
- (1) A and B
  - (2) A and D
  - (3) B and C
  - (4) C and D
15. The two cells shown below are examined under a microscope.



Which of the following parts of the cells are matched correctly to their functions?

	Parts of the cell	Function
(1)	E, H	They keep the cells firm.
(2)	D, H	They control substances that go in or out of the cells.
(3)	C, F	They control the activities that happen inside the cells.
(4)	B, G	They allow food and oxygen to move around with the cells.

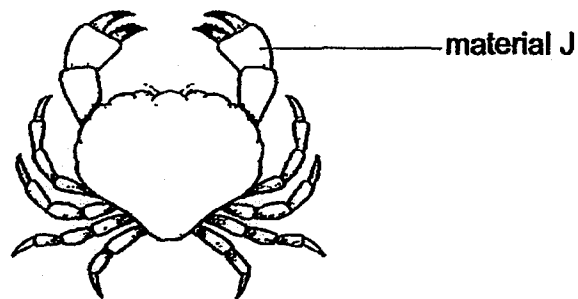
16. The diagram below is a cell viewed under the microscope.



Which of the following is correct?

	Type of cell	Explanation
(1)	Cell from leaf	The cell contains chloroplast.
(2)	Cell from leaf	The cell contains cell wall and chloroplast.
(3)	Cell from root	The cell contains cell membrane.
(4)	Cell from root	The cell contains cell wall and no chloroplast.

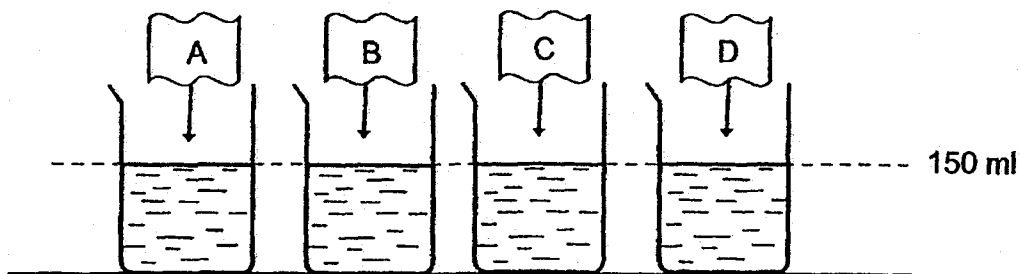
17. An animal is covered in a shell that supports its body and protects its internal organs. The shell is made of material J.



Which property of material J allows the shell to perform the functions described?

- (1) strength
- (2) flexibility
- (3) waterproof
- (4) ability to sink

18. Cassandra placed four different materials, A, B, C and D, of the same size into four identical beakers. Each beaker contained 150 ml of water as shown below.



She removed the materials after ten minutes. She measured the remaining water in each beaker and recorded it in the table below.

Beaker	Volume of water left in the beaker after ten minutes (ml)
A	20
B	145
C	90
D	55

Based on the observations above, which material will be most suitable to make the canopy of an umbrella?

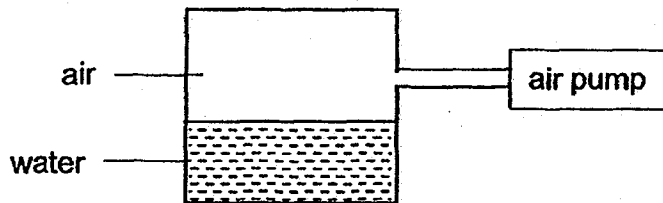
- (1) A
  - (2) B
  - (3) C
  - (4) D
19. Ahmad placed some objects on a balance as shown below.



Based on the observations above, which one of the following statements is most likely to be correct?

- (1) A has a greater mass than B and C.
- (2) C has a greater mass than A and B.
- (3) A has a greater volume than B and C.
- (4) C has a greater volume than A and B.

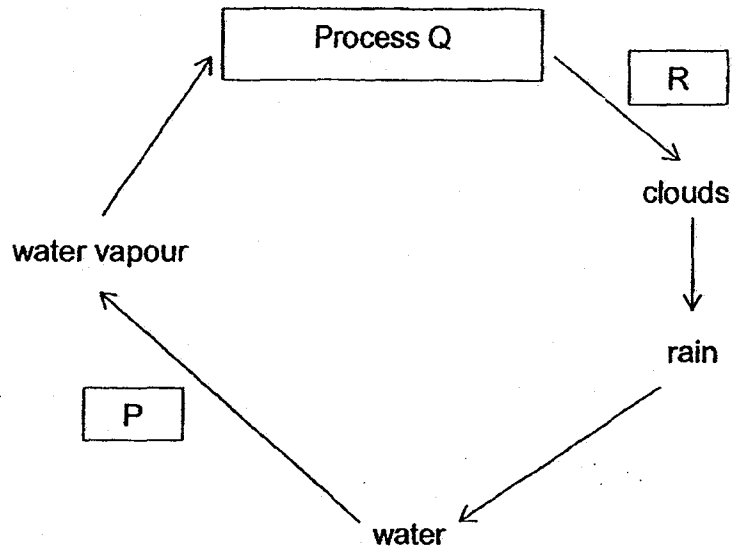
20. The diagram below shows a container filled with air and water.



If more air was pumped into the container, which of the following statements is likely to be correct?

- (1) The total mass of the container would increase.
- (2) The total mass of the container would remain the same.
- (3) The volume of air in the container would increase as it had been compressed.
- (4) The volume of air in the container would decreased as it had been compressed.

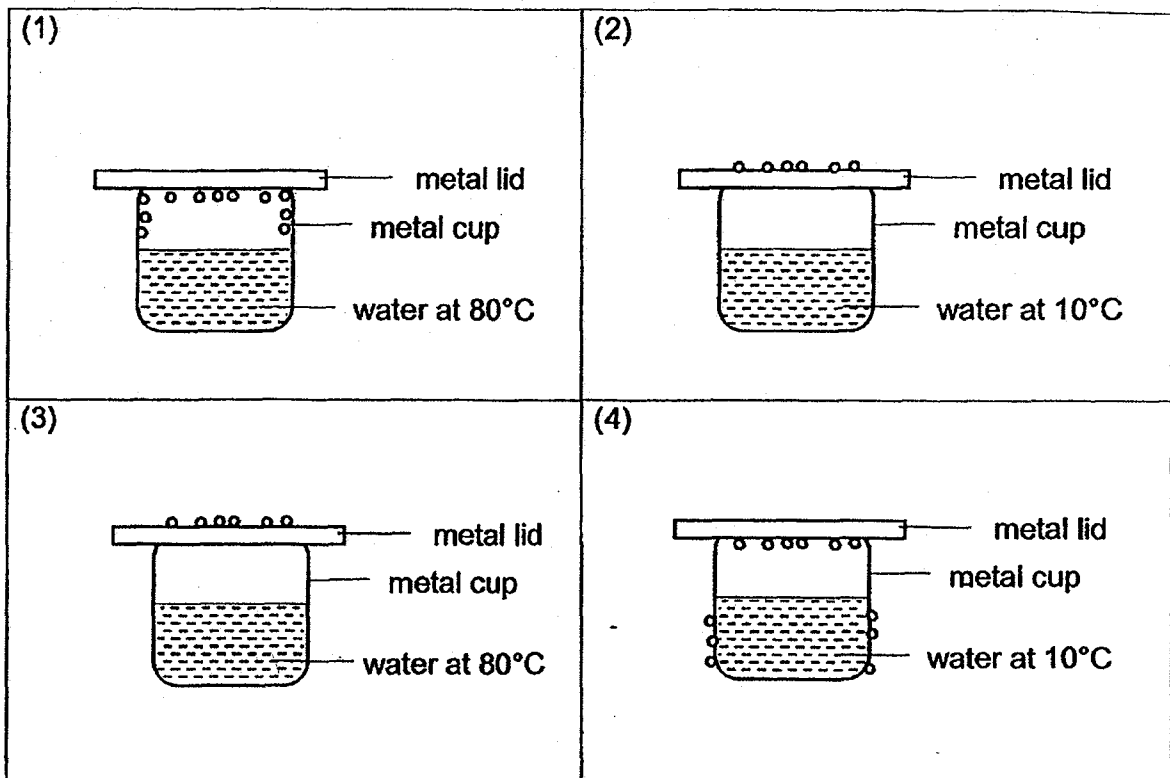
21. The diagram below shows the water cycle.



Which of following is correct?

	P	Process Q	R
(1)	lose heat	evaporation	gain heat
(2)	gain heat	condensation	gain heat
(3)	lose heat	evaporation	lose heat
(4)	gain heat	condensation	lose heat

22. Which of the following correctly shows where water droplets would form on the metal lid after a short while?

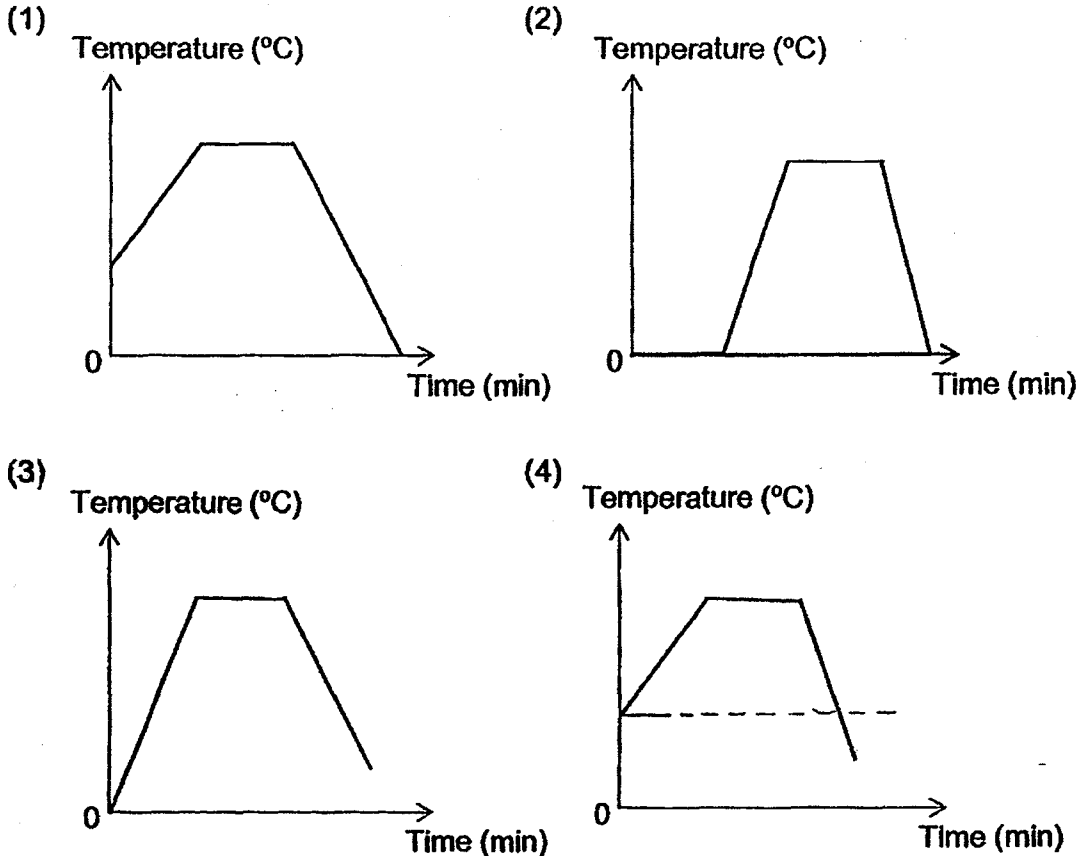




23. Substance P freezes at  $55^{\circ}\text{C}$  and boils at  $200^{\circ}\text{C}$ .  
Which of the following shows the correct state of substance P?

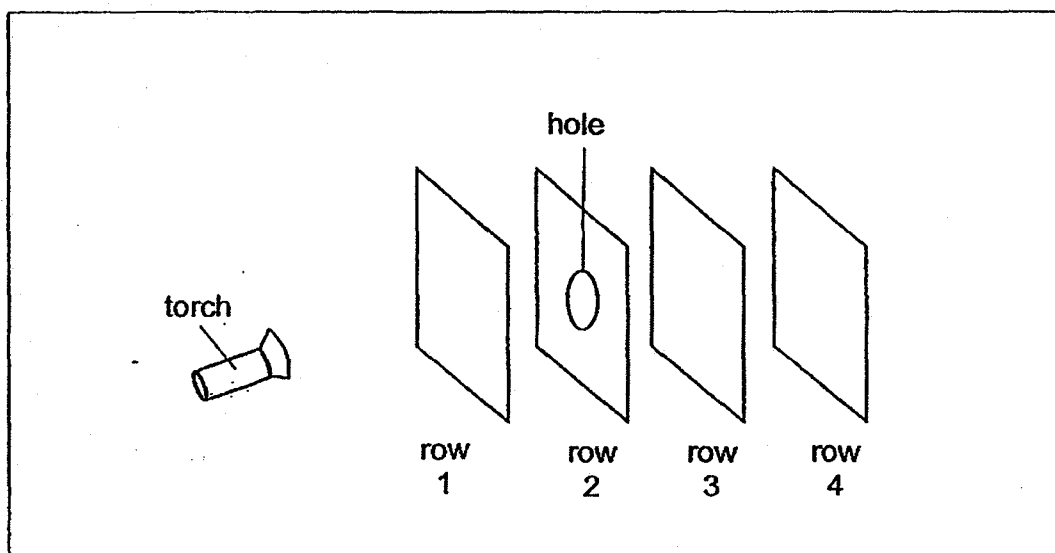
State of substance P at	
$60^{\circ}\text{C}$	$165^{\circ}\text{C}$
(1) solid	liquid
(2) solid	gas
(3) liquid	liquid
(4) liquid	gas

24. Mother heated a pot of water until it started to boil. Then she continued to let it boil for another ten minutes before she took it off the stove. After that, she placed it in the refrigerator. Which of the following graphs below shows the changes in the water temperature correctly?



25. Sakinah set up an experiment in a dark room using a torch and four sheets made of different materials. The sheet in row 2 had a hole cut out. The properties of the four sheets of materials are shown in the table below.

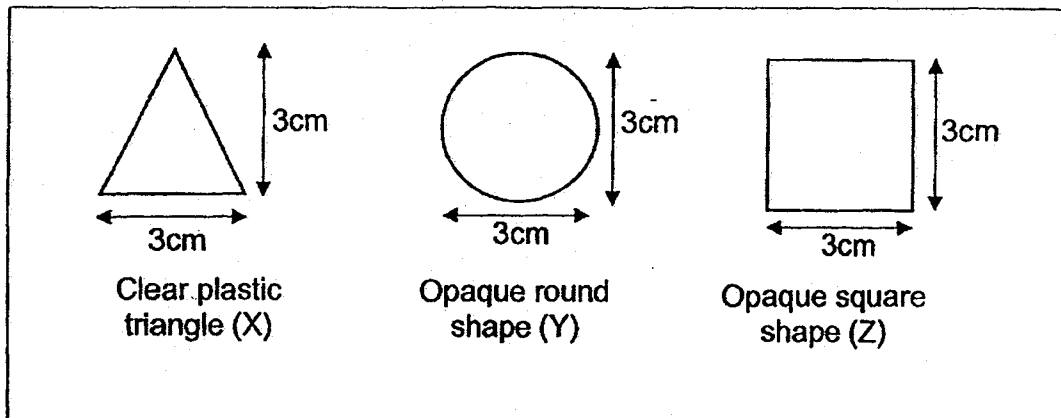
Property of materials	Materials
Does not allow light to pass through	A, B
Allow light to pass through	C, D



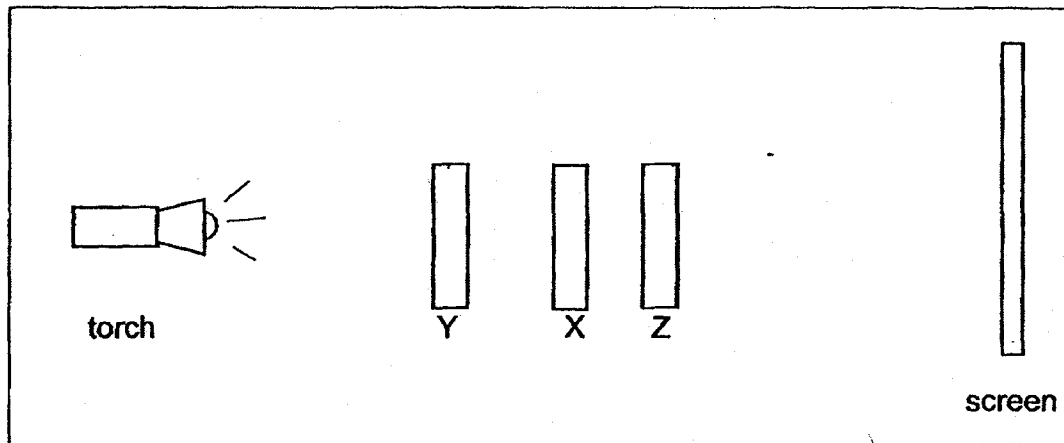
Suggest how she should arrange the sheets if she wanted a bright circular patch of light to appear on the sheet in row 4?

	Row 1	Row 2	Row 3	Row 4
(1)	A	B	C	D
(2)	B	D	A	C
(3)	C	A	D	B
(4)	D	C	B	A

26. The diagram below shows three objects.



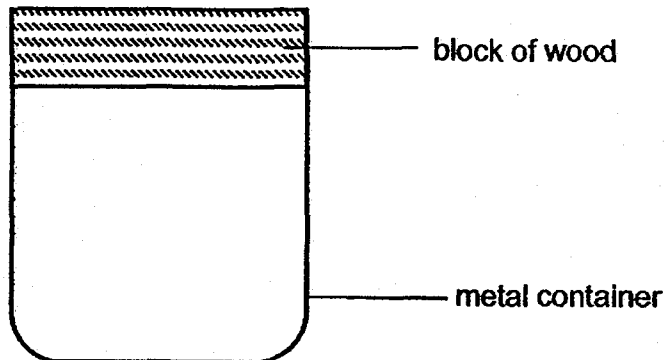
The three objects were placed between a torch and a screen as shown below.



Which of the following most likely shows the shadow casted on the screen?



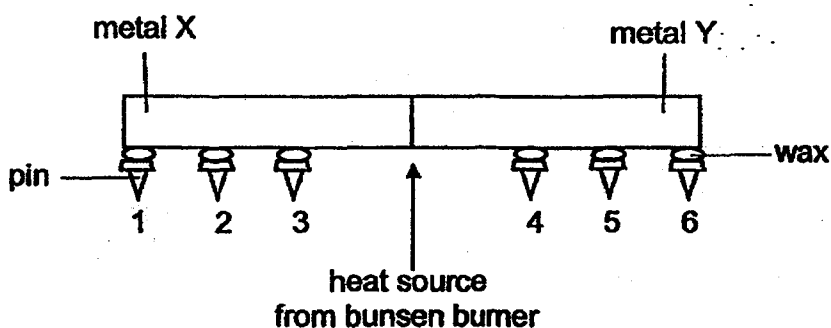
27. Weiming found a block of wood stuck in a metal container.



Which of the following options would allow him to remove the wooden block from the metal container?

- (1) Heat the metal container.
- (2) Heat both the metal container and block of wood.
- (3) Place the metal container in a container filled with ice.
- (4) Invert the container and place the portion with the block of wood in a container filled with ice.

28. Six pins were stuck onto a metal rod with the same amount of wax in the diagram below. The metal rod was made of two different type of metals, X and Y. When the metal was heated in the middle, the pins dropped off in order of 4, 5, 3, 6, 2 and 1.



Which of the following most likely explains the above observation?

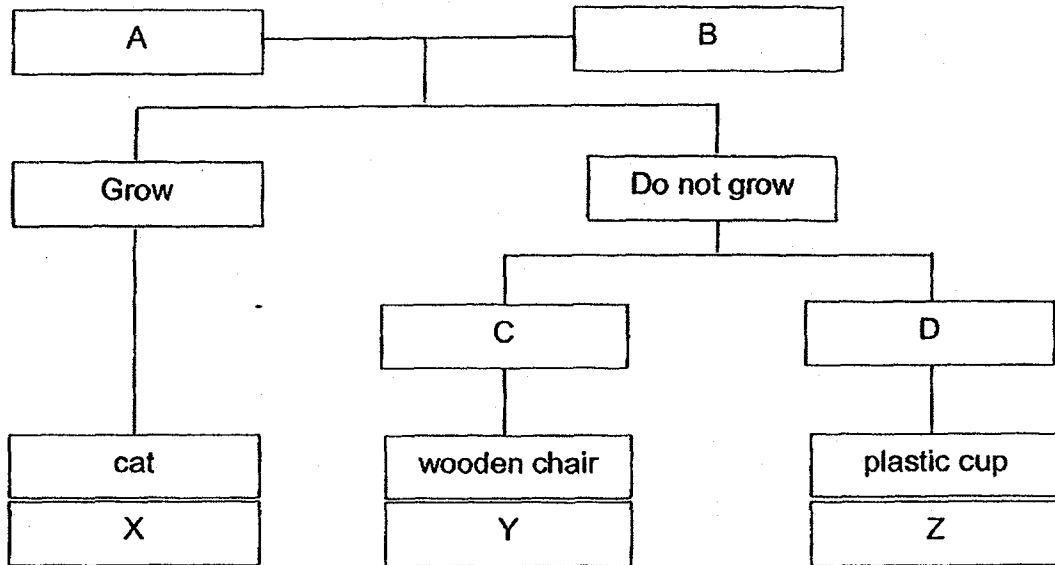
- (1) Heat travelled from metal X to metal Y.
- (2) Heat travelled from metal Y to metal X.
- (3) Metal X conducted heat better than metal Y.
- (4) Metal Y conducted heat better than metal X.

**SECTION B (44 marks)**

For questions 29 to 41, write your answers clearly in the spaces provided.

The number of marks is shown in brackets [ ] at the end of each question or part question.

29. Study the classification table below.



(a) Fill in a suitable heading for A, B, C and D. [2]

(i) A: \_\_\_\_\_

(ii) B: \_\_\_\_\_

(iii) C: \_\_\_\_\_

(iv) D: \_\_\_\_\_

(b) Which item (X, Y or Z) best represents a woollen sweater in the above classification table? [1]

Score	3
-------	---

30. The table below shows the effect of temperature on the length of life cycle of *Aedes* mosquitos which spread dengue fever.

Temperature (°C)	Average length of life cycle (days)
16	38.8
22	23.4
28	13.1
33	12.5
36	9.3

- (a) What is the relationship between temperature and the average length of life cycle of the *Aedes* mosquito? [1]

---



---

The table below shows the average temperature recorded for five months.

Months	Average temperature (°C)
January	26.5
February	27
March	27.3
April	27.8
May	28.3

- (b) During which month would there be the greatest number of dengue fever cases? Explain your answer clearly. [2]

---



---

Score	3
-------	---

31. The table below shows the temperature range required to germinate seeds X, Y and Z.

Seed	Temperature of soil for seed germination (°C)		
	Minimum soil temperature	Most favourable soil temperature range	Maximum soil temperature
X	15.6	23.9 to 29.4	29.4
Y	4.4	15.6 to 29.4	35.0
Z	1.7	15.6 to 23.9	29.4

Based on the table above, answer the following question:

(a) Which seed(s) is/are most likely able to germinate at 2°C? [1]

\_\_\_\_\_

(b) Singapore's average daily temperature is around 28°C. Which seed(s) will be most suitable to be grown in Singapore so that they can germinate well? Explain your answer. [2]

\_\_\_\_\_

\_\_\_\_\_

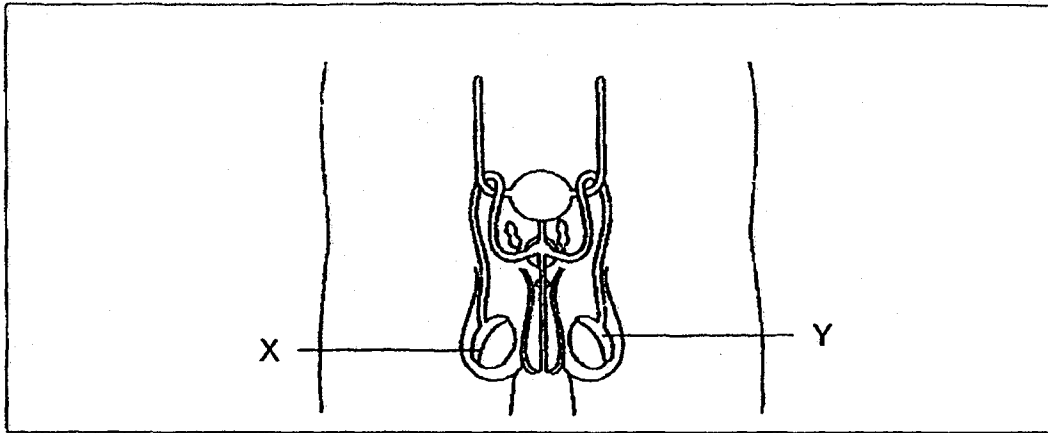
(c) If the temperature of the soil fell below 15.6°C for seed X, would the seed be able to germinate? Give a reason for your answer. [1]

\_\_\_\_\_

\_\_\_\_\_

Score	4
-------	---

32. The diagram shows the male reproductive system of Mr Lim.



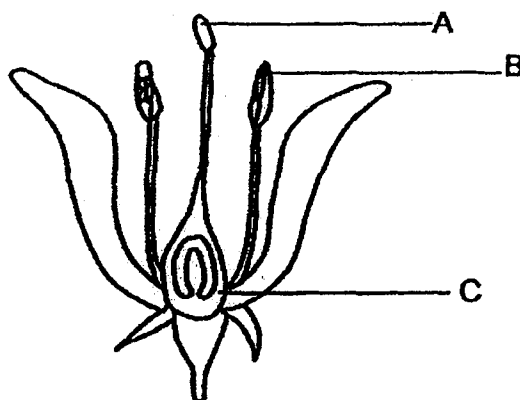
(a) Could Mr Lim have any offspring if only part X was removed? Explain your answer. [2]

---



---

The diagram below shows the reproductive system of a plant.



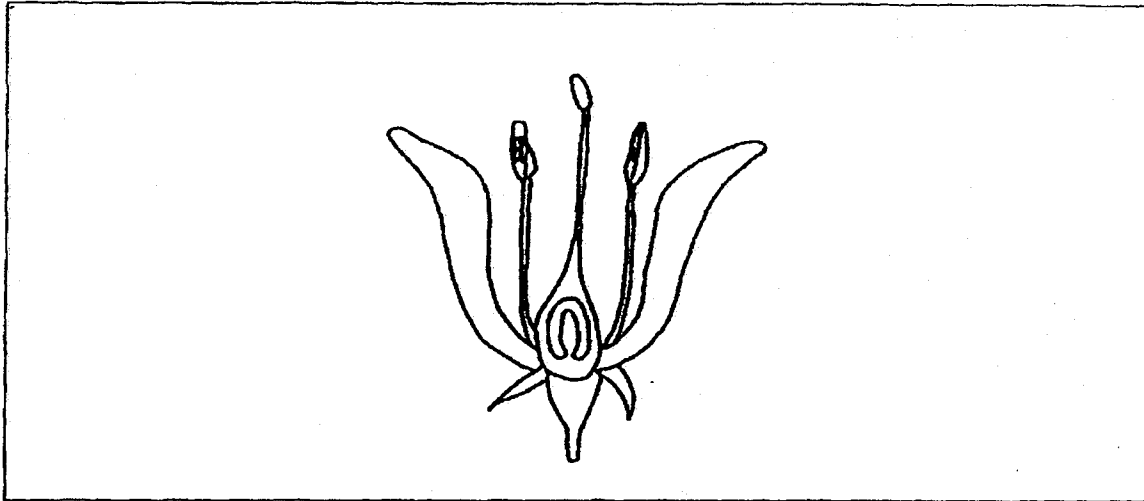
(b) Which part of the flower, A, B or C, performs the same function as part X? [1]

---

Score	3
-------	---

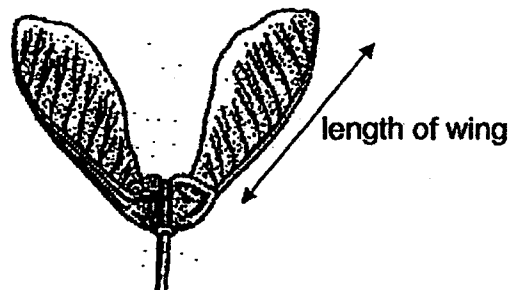


33. The diagram below shows a cross section of a flower from plant E.



- (a) Draw arrow(s) to represent the process of pollination in the diagram above. [1]

Plant E produced the seed as shown below. The seed is dispersed by wind.



Clara carried out an experiment to find out if the length of the wings of the seed would affect the distance travelled by the seed.

Clara recorded the results in the table below.

Length of wings (cm)	Distance it travelled by the seed (cm)
2.0	10
2.2	18
2.4	25
2.6	38

Score	1
-------	---

Continue on next page

Continued from previous page

- (b) Based on Clara's results, what is the relationship between the length of the wings and the distance travelled by the seed? [1]

---

---

- (c) Seeds with shorter wing length has a lower survival rate due to competition of resources. State one important resource that the plants would be competing for. [1]

---

---

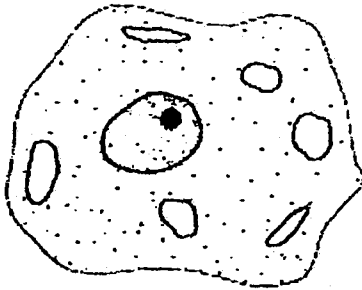
- (d) Clara also wanted to find out if the height at which the seed from plant E is dropped affects the distance it travels. Suggest two variables that she has to keep constant when conducting this experiment. [2]

---

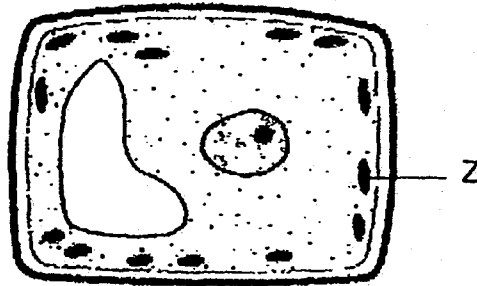
---

Score	4
-------	---

34. The diagrams below show two different type of cells.



Cell A



Cell B

(a) State 2 similarities observed in the 2 different cells. [2]

(i) \_\_\_\_\_

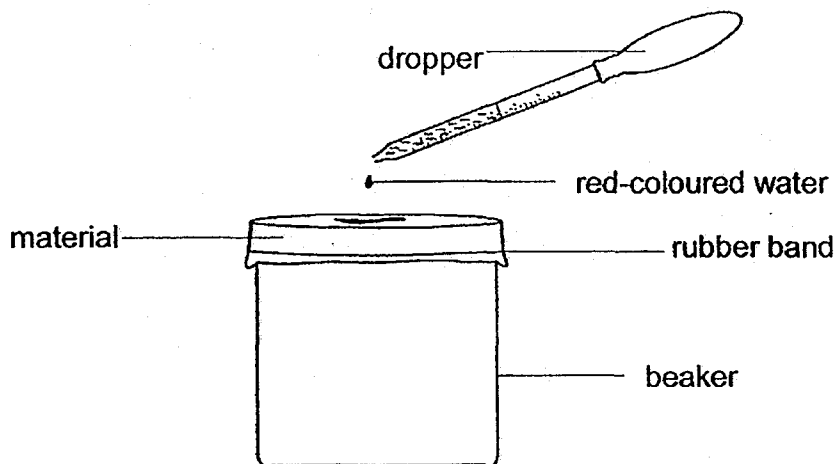
(ii) \_\_\_\_\_

(b) It was observed that Z had the presence of greenish pigment under the microscope. State the function of part Z. [1]

\_\_\_\_\_  
\_\_\_\_\_

Score	3
-------	---

35. Jolyn conducted an experiment as shown to investigate the property of three different materials.



She dropped 10 ml of red-coloured water onto material W using a dropper and measured the amount of red-coloured water collected in the beaker after five minutes. She repeated the experiment with materials, X and Y, and recorded her results in the table below.

Material	Amount of water collected in the beaker after five minutes (ml)
W	6
X	0
Y	9

- (a) What property of the material was Jolyn investigating? [1]

---

- (b) Explain how the change in the thickness of material would affect Jolyn's results. [1]

---



---

Continue on next page

Score	2
-------	---

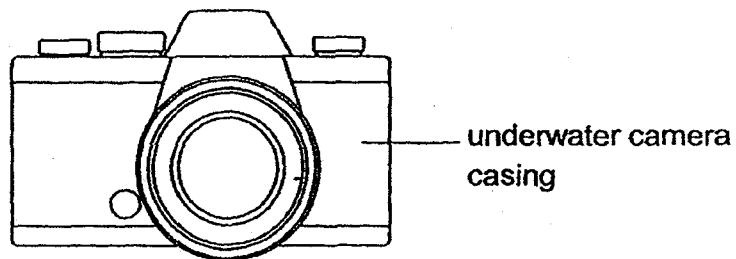
Continued from previous page

- (c) Apart from thickness of the material and the duration of the experiment, state another variable that should be kept constant to ensure a fair experiment was conducted. [1]

---

---

Diagram below shows an underwater camera casing. The casing serves to keep the camera dry while the diver is underwater capturing images.



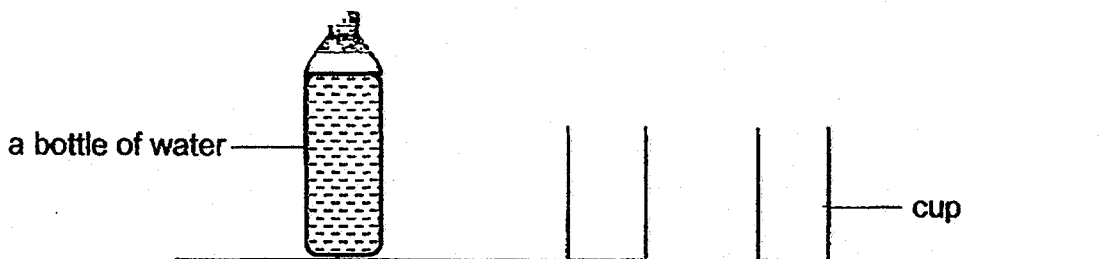
- (d) Which material, W, X or Y, is most suitable for making the underwater camera casing? Give a reason for your answer. [1]

---

---

Score	2
-------	---

36. Chee Meng bought a bottle of water to share with his younger brother.



When he distributed the water equally into two cups, the cups were only half filled with water.

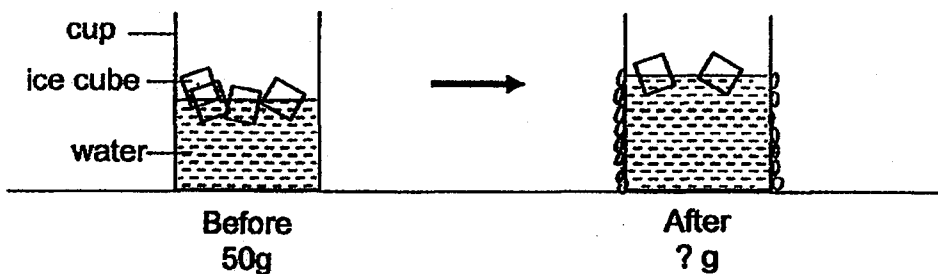
- (a) After he had added ice cubes into each of the cups, the cups were filled with water to the brim. Explain his observations clearly. [2]

---



---

- (b) He observed water droplets formed on the cup after a while. Draw the water droplets observed on the cup below labelled 'after'. [1]



- (c) Would the mass of the cup containing the water be more, less or remain the same at 50g after all the ice had melted? Give a reason for your answer. [1]

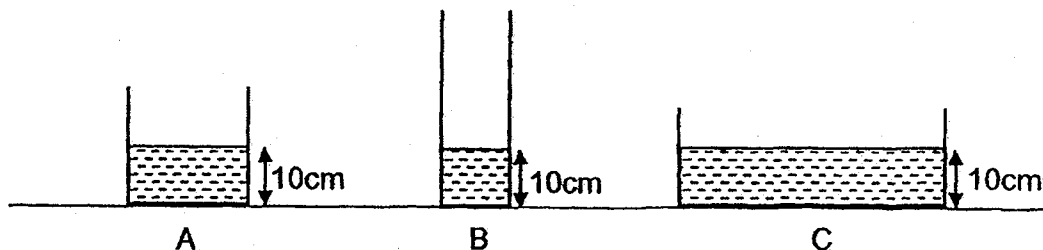
---



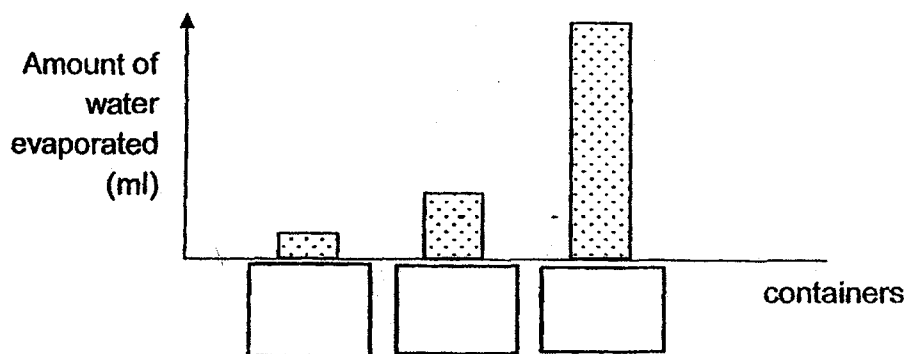
---

Score	4
-------	---

37. Abigail conducted an experiment using containers A, B and C shown below. She filled the containers with different volume of water at room temperature and placed them in a room.

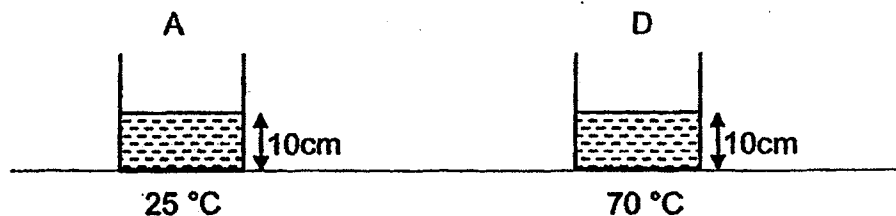


After thirty minutes, she measured the amount of water evaporated in the containers and recorded her results in the graph below.



- (a) In the above graph, write A, B and C in the correct boxes showing the amount of water evaporated in their container. [2]

She then carried out another experiment to compare how the temperature of water affected the rate of evaporation of water. She filled two identical containers, A and D, with the same amount of water but of different temperature.



- (b) Which set-up, A or D, will there be a greater rate of evaporation? Give a reason for your answer. [1]

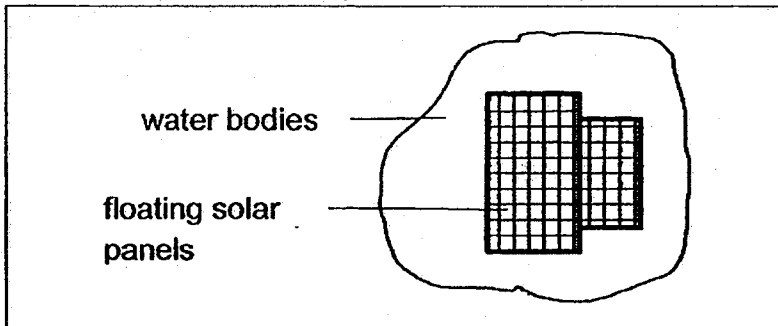
---



---

Continued from previous page

- (c) In some countries, solar floating panels are built on reservoirs to capture heat and light energy to generate electricity as seen below.



In land scarce Singapore, apart from saving space, the floating solar panel on reservoirs can help to conserve the water resource by slowing down the rate of evaporation. Do you agree? Give a reason for your answer. [1]

---

---

38. Peter went to school in an air-conditioned bus. When he got off the bus, his glasses immediately misted up with tiny water droplets as seen below.



misted glasses

- (a) Explain why his glasses became misted up after he got off the bus. [2]

---

---

After a while, he noticed that the tiny water droplets started to disappear.

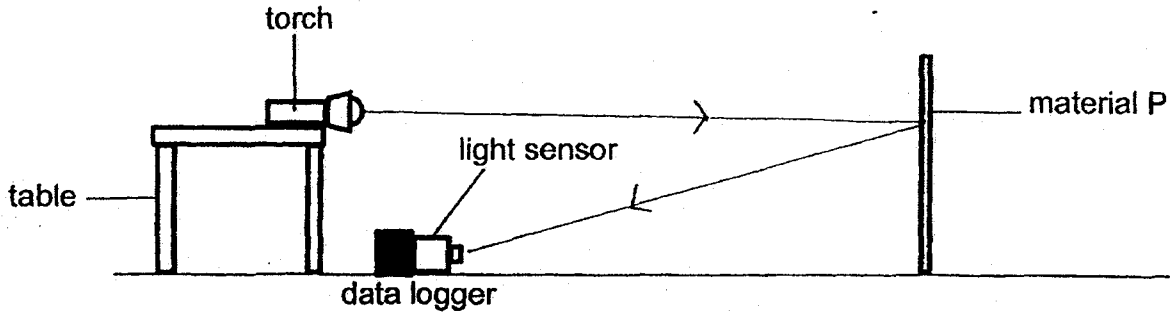
- (b) Give a reason why the tiny water droplets started to disappear from his glasses. [1]

---

---



39. Siti set up the following experiment in a room.



She shone light onto material P and the amount of light received by the light sensor was measured. She then repeated the experiment with materials Q, R and S. The results are shown in the table below.

Material	Reading on light sensor (units)
P	36
Q	12
R	100
S	57

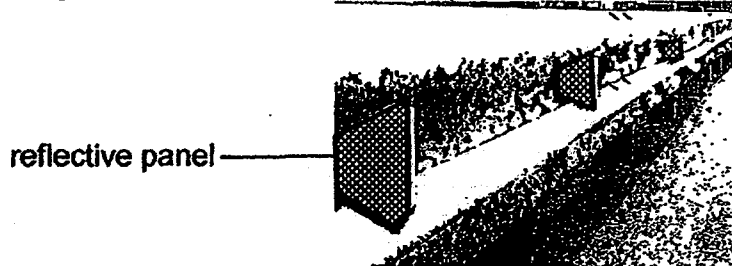
(a) Explain how the light sensor was able to measure the amount of light from the torch even though the light sensor was placed in front of the material. [1]

---



---

Diagram below shows reflective panels on guard railings on the roads.



(b) Based on Siti's results, which material should be most suitable to make the reflective panels on guard railings to warn drivers of approaching bends at night? Explain your answer clearly. [2]

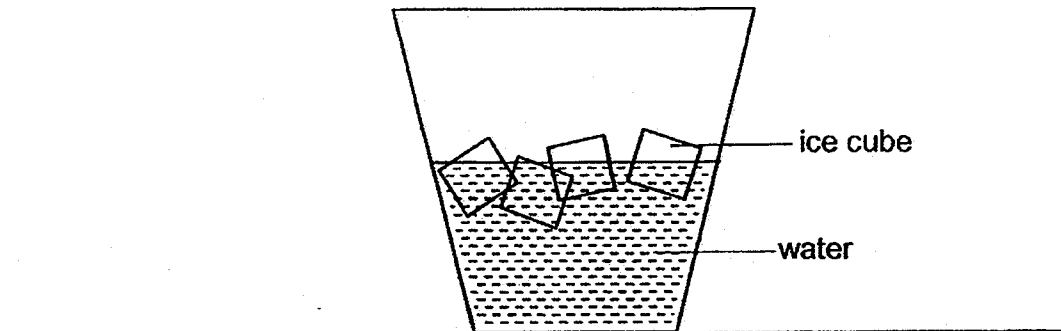
---



---

Score	3
-------	---

40. Stacey added four ice cubes to a glass of water as shown below.



(a) The initial temperature of the water in the glass was  $25^{\circ}\text{C}$ .  
What would happen to the temperature of the water after the ice cubes were added into water in the glass? [1]

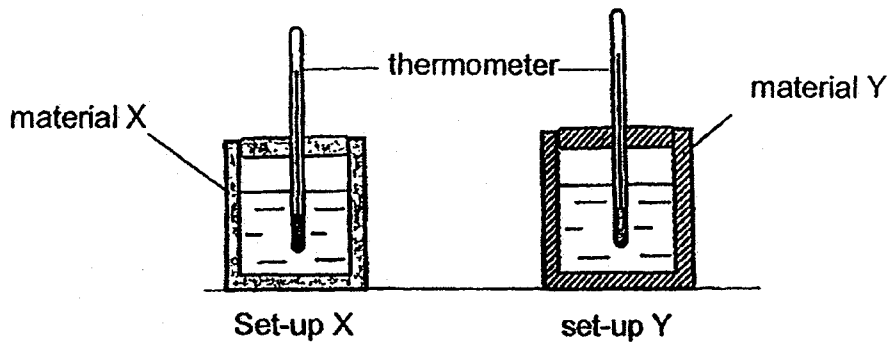
\_\_\_\_\_

(b) Would there be a greater change in temperature of water when more ice cubes were added into the glass above? Give a reason for your answer. [1]

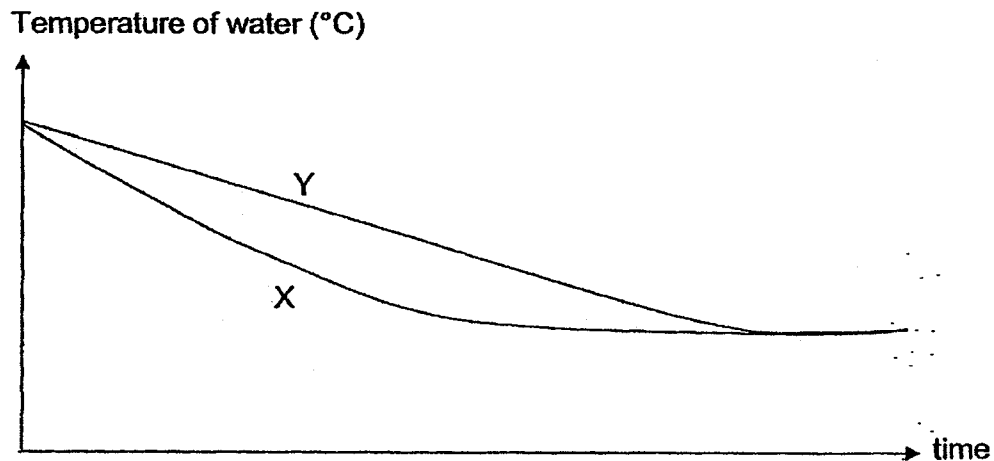
\_\_\_\_\_  
\_\_\_\_\_

Score	2
-------	---

41. Containers in set-ups X and Y below were of the same size and thickness but made of different materials. The containers were filled with the same volume of water at 100°C and left on the table for twenty-four hours.



The graph below shows the temperature in each set-up over the period of twenty-four hours.



- (a) Based on the results, what can be concluded about the heat conductivity of the materials? [1]

---



---

- (b) Material Y had small air spaces inside it. Explain how the air spaces in material Y would help to keep a person warm in winter. [2]

---



---

Score	3
-------	---

[SgTestPaper.com](#) | [P6](#) | [P5](#) | [P4](#) | [P3](#) | [P2](#) | [P1](#) |  
[ENGLISH](#) | [MATHS](#) | [SCIENCE](#) | [CHINESE](#) |  
[TAMIL](#) | [2019](#) | [2018](#) | [2017](#) | [2016](#) |  
[PAST WORKSHEETS](#) | [SG MATH](#) |  
[ENGLISH COMPOSITION](#) |  
[ASSESSMENT BOOKS](#) |



## Free Downloads

### SgTest Papers

- [Primary 6](#)
- [Primary 5](#)
- [Primary 4](#)
- [Primary 3](#)
- [Primary 2](#)
- [Primary 1](#)

### Top School Test Papers

- [Nanyang](#)
- [Raffles](#)
- [Rosyth](#)
- [Tao Nan](#)
- [CHIJ St Nicholas](#)
- [Red Swastika](#)

### Free Weekly Worksheet Subscription

[Model English Composition samples for Primary School](#)

[2018 & Earlier Worksheets](#)

[One-Click Download of All 2019 P6 papers](#)

[One-Click Download of All 2019 P5 papers](#)

[One-Click Download of All 2019 P4 papers](#)

Click on the links to go to the pages

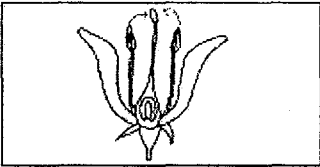
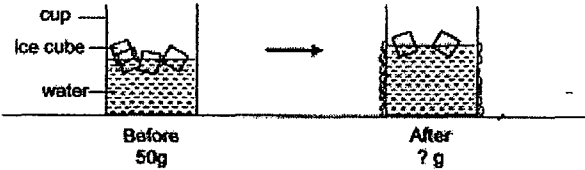
SCHOOL : RAFFLES GIRLS' PRIMARY SCHOOL  
 LEVEL : PRIMARY 5  
 SUBJECT : SCIENCE  
 TERM : 2019 SA1

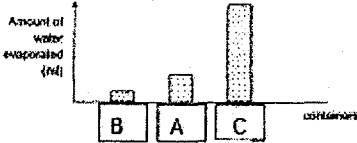
**SECTION A**

Q 1	Q2	Q3	Q4	Q5	Q6	Q7	Q8	Q9	Q10
2	3	4	3	4	1	2	3	1	3
Q 11	Q12	Q13	Q14	Q15	Q16	Q17	Q18	Q19	Q20
3	3	4	4	2	4	1	2	2	1
Q 21	Q22	Q23	Q24	Q25	Q26	Q27	Q28		
4	1	3	4	3	2	1	4		

**SECTION B**

Q29)	<p>a i) A : Living things            ii) B : Non-living things            iii) C : Not flexible            iv) D : Flexible</p> <p>b) Item Z</p>
Q30)	<p>a) The higher the temperature, the shorter the average length of the life cycle of the Aedes mosquito.</p> <p>b) May. It has the highest temperature in May and the mosquito would have the shortest average length of life cycle therefore it would have the fastest reproduction rate.</p>
Q31)	<p>a) Seed Z</p> <p>b) As the average temperature in Singapore is 28°C, it falls in the most favourable soil temperature range of seed X and Y. The seeds will be able to get sufficient warmth for germination to take place.</p> <p>c) No. Seed X needs the soil to be at least 15.6°C for seed germination</p>

	to occur. (The soil will not have sufficient warmth to germinate.)
Q32)	<p>a) Yes. Part Y, which produces the male sex cell, can still allow Mr Lim to have offspring, as part Y can produce sperms to fertilise the egg cell for sexual reproduction.</p> <p>b) Part B</p>
Q33)	<p>a)</p> <div style="text-align: center;">  </div> <p>b) The longer the length of the wings, the longer the distance travelled by the seed.</p> <p>c) Light</p> <p>d) The length of the wings and the mass of the seed.</p>
Q34)	<p>a i) Both cells have a nucleus.</p> <p>ii) Both cells have a cell membrane.</p> <p>b) Z, the chloroplast, contains chlorophyll for the plant to trap light and photosynthesise.</p>
Q35)	<p>a) If the material was absorbent or not.</p> <p>b) As the thickness of the material increases, the amount of water collected in the beaker will decrease.</p> <p>c) The consistency of which part of the material the red water was dripped on.</p> <p>d) Material X. Material X is not absorbent. It is waterproof so it will keep the camera dry.</p>
Q36)	<p>a) Ice, which is matter, has a fixed volume and it occupied space in the cup. (The ice droplets the water in the cup)</p> <p>b)</p> <div style="text-align: center;">  </div>

	<p>c)The mass of the cup containing the water would be more than 50g. The warmer water vapour condensed into tiny water droplets on the cooler outer surface of the cup</p>
Q37)	<p>a)</p>  <p>b)Set-up D. It has a higher temperature than Set-up A. The higher the temperature of the water, the faster the rate of evaporation.</p> <p>c)Yes. I do. The floating solar panels reduce the amount of exposed surface area in contact with the surroundings on the water bodies.</p>
Q38)	<p>a)The warmer water vapour in the surrounding air came into contact with and lost heat to the cooler surface area of his glasses and condensed into tiny water droplets.</p> <p>b)The tiny water droplets gained heat and evaporated.</p>
Q39)	<p>a)Light from the torch reflected off material P into the light sensor.</p> <p>b)Material R. It reflects the most amount of light thus drivers will see the guard railings from the farthest distance. It will reflect most amount of light from the car headlights into the eyes of the driver to help them see the bend.</p>
Q40)	<p>a)The temperature of the water would decrease.</p> <p>b)Yes, there would. The water in the glass would lose heat faster to the ice cubes.</p>
Q41)	<p>a)Material X is a better conductor of heat than material Y.</p> <p>b)Air is a poor conductor of heat, so the trapped air in the air spaces of material Y would make the person lose his body heat slower than material X to the cooler surrounding air.</p>

